

Campus as a Living Lab: Student Learning & Campus Sustainability Operations

Kareina D'Souza, Sustainability Manager
Office of Sustainability, Dalhousie
University



May 2019

Who Are We

- Administrative Department that reports to VP FA
- Separate from Facilities but works with them and other departments, faculties, student groups, community
- Conduct applied research, develop plans and policies, monitors/reports, and implement projects.



Dalhousie University Campuses



150+ buildings/houses in downtown Halifax, Nova Scotia Canada and Bible Hill.

Includes 5.6 million gross square feet of building space.



A campus population of approximately 26,000 (18,500 students, 7500 faculty and staff) and 13 Faculties.

Four Campuses: Studley, Carleton, Sexton, Agricultural

Two District Heating Systems

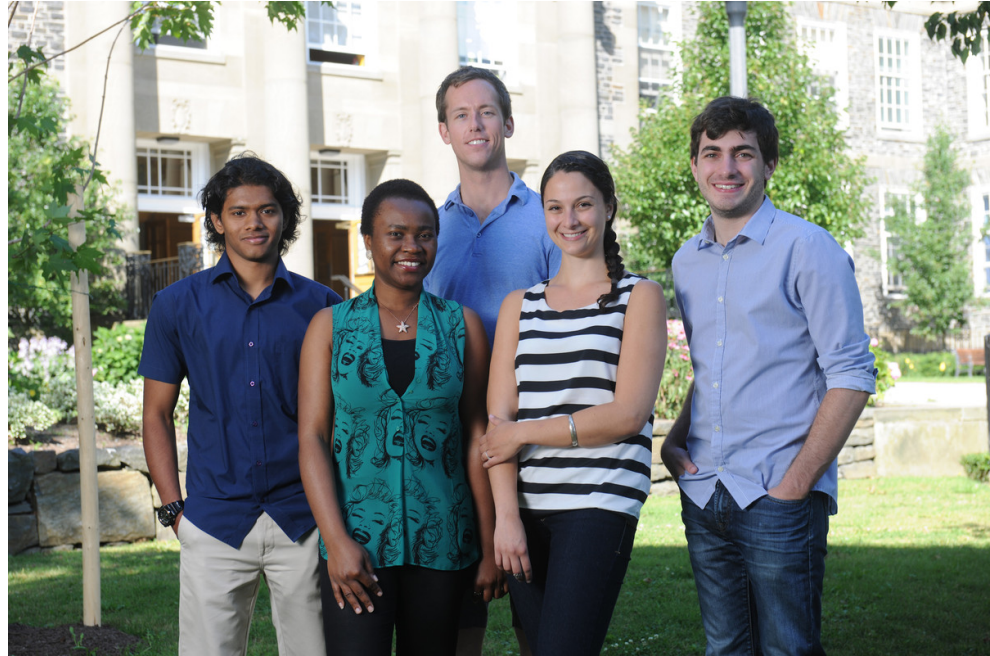
Student Learning & Campus Sustainability Operations

- PhD -Master Thesis
- Under-graduate Thesis
- Summer and part-time employment
- Coop – Internships
 - Master's and Undergraduate
- Class Projects
- Volunteers
- Society Activities

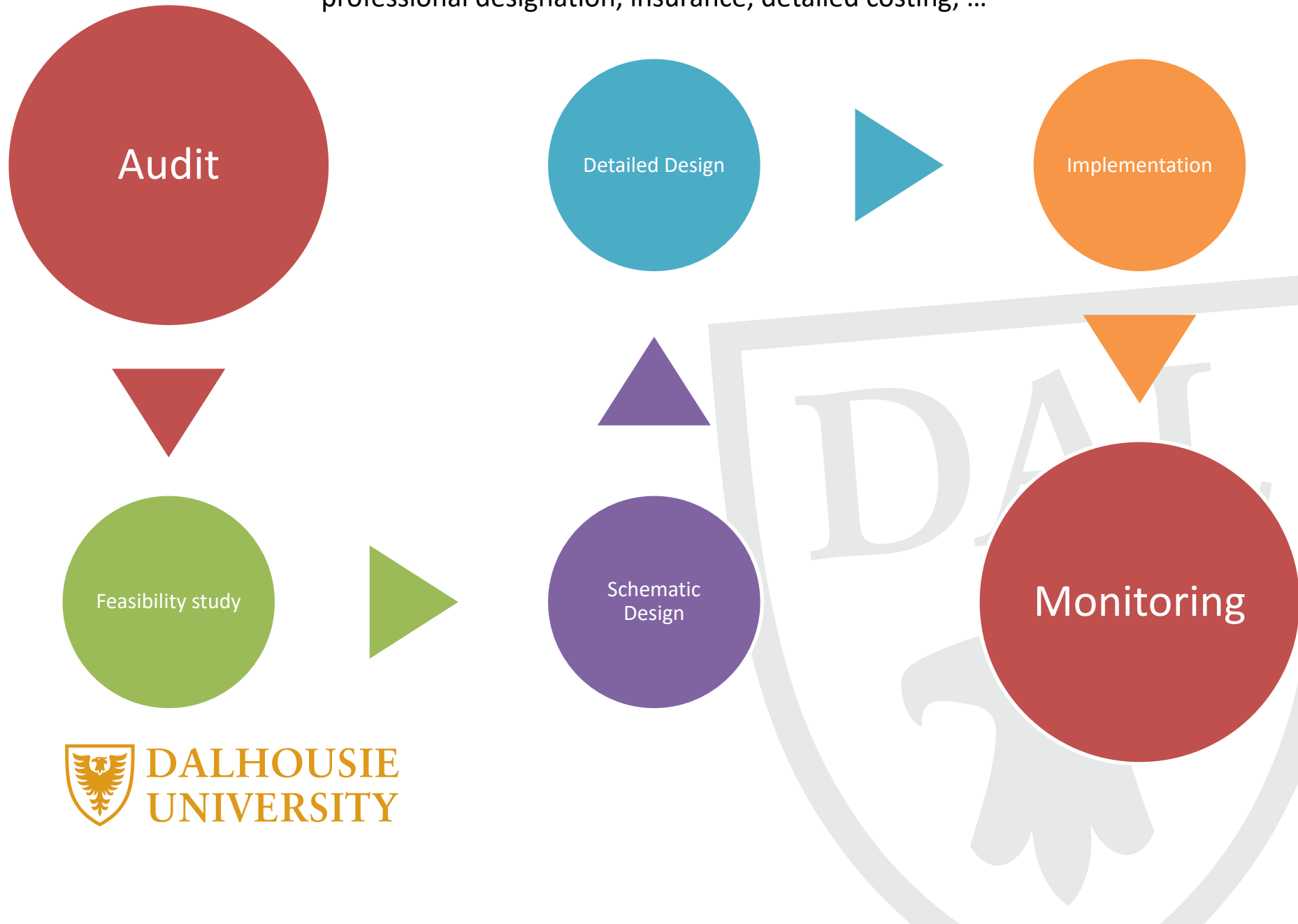


Student Summary

- Between 60 -100 students work on projects with the Office of Sustainability each year through independent research, class work, as volunteers and as a staff.
- Students are from many faculties – management, engineering, architecture and planning, science, social science, agriculture ...

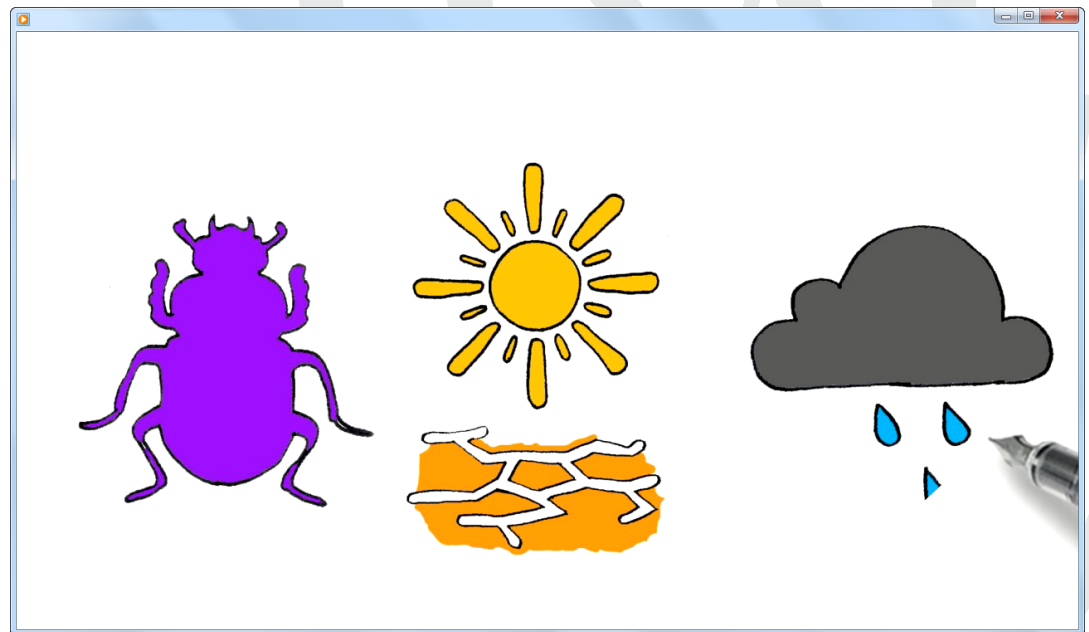


Students often engaged in auditing, feasibility study and monitoring. Other steps require professional designation, insurance, detailed costing, ...



Campus as a Living Lab

- Waste audits
- Water audits
- Transportation Demand Management corridor
- Climate change planning
- Behavioural changes
- Student opinions



Methods

- Qualitative vs Quantitative
- Qualitative
 - Surveys
 - Interviews
- Quantitative
 - Counts
 - Quizzes



Want to win a food box from the DSU's Farmer's Market? Or a giftcard for Tim Horton's?

We've got you covered! That is if you take our survey, in which you could win a giftcard for one of the above. Our survey is for ENVS/SUST-3502 (The Campus as a Living Laboratory), and seeks to analyze students' perceptions of interior campus green spaces in relation with their wellbeing and productivity.



It is completely confidential and online. All you have to do answer a few quick questions by visiting this link:
<https://goo.gl/forms/9l2EjmqVwdHxtDx1>
Or by scanning this QR code:



Please note the survey is only open to Dalhousie and University of King's College students. If you have any questions or concerns please email Eva Thorpe at ev358234@dal.ca or Amy Mui (ENVS/SUST-3502 professor) at amy.mui@dal.ca.



WATER HABITS & YOU

A DALHOUSIE STUDY

A black smartphone with a white screen. The screen shows a large QR code in the center. Below the QR code, the text "SCAN TODAY" is displayed. To the right of the text are two app icons: a camera icon labeled "Camera" and a Snapchat icon labeled "Snapchat". The phone is surrounded by a dynamic splash of water.

- 1 SCAN CODE
- 2 COMPLETE SURVEY
- 3 WIN A PRIZE!

FOR MORE INFO CONTACT
DAL.WATER.SURVEY@GMAIL.COM

Part of a research study by students of
ENVS-SUST 3502 Campus as a living lab

HELP US SORT IT OUT



We're looking for participants to fill out a confidential waste sorting survey. As part of our ENVS 3502 class we want to assess how much individuals on campus really know about where their trash goes. You can complete this survey for a chance to

Win a \$50 Visa Gift Card

You can scan the code or follow this link:

<http://bit.ly/2C9gFv7>

Sponsored by:



Do You Live in Residence?

ENVS/SUST 3502 Research Survey

Assessing the perceptions of Dalhousie students living in Halifax residences on sustainability and reusable food containers in residence meal halls.

Estimated survey completion time: 5 - 15 minutes

Participation is confidential

Students who complete the survey will be entered in a random draw to win one of two \$25 gift cards for Glitter Bean Cafe

To access the online survey, please take a picture of the code on Snapchat:



If you have any questions, comments, or concerns, please contact
js783882@dal.ca

Sponsored by:



Challenges

- Time to mentor
- Time and commitments of students
- Quality of the product
- Student interest and office needs
- From a project delivery perspective – time value of money
- Partner fatigue



Successes

- Student work can and does assist in making change
- Career development and job experience: we see the tangible results
- Learning can be enhanced – connect theory with practice

